

Baler ARTechnic PBPe500x-k



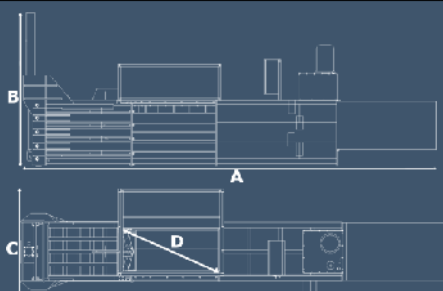
Advantages of the machine:

- **The moving of the pressing plate is kept extremely rigid and straight.** The hydraulic cylinder does not take the bending forces from the pressing plate, which could lead to its damage. These forces are taken over by special plastic guides which are tailored to the corners of the chamber. The guides are made from specially chosen plastic, which is characterized by very high resistance to abrasion. Therefore, these elements are extremely durable. This avoids the need to control the tilt of the pressing plate. Because of all this you can easily exploit our machines, even for very demanding materials, without worrying of an improperly use of the machine.
- **The steel construction** of our machines is designed to withstand loads far in excess of the rated load for the different models (this is why our machines have a generally bigger own mass compared to the competition)
- **A system to prevent the decompressing of material** after subsequent cycles of work.
- **Possibility to bind the packages (bales) with all commonly used materials** like a polyester tape, twine or steel wire;
- **The possibility of producing specified machines** concerning the customer's request e.g. changes in the stroke of the pressing plate, changes in the loading hole, changes in the size of the bale, etc.
- **Possibility to choose the version of the controller** and to choose additional options, depending on individual needs
- **Unmanned and durable** hydraulic system
- **No hidden costs of operating the machine**

Technical specification

Number of chambers:	single	Loading:	top
Charging hole:	2000 x 720 mm	Bale tying:	manual
Max. pressure:	500kN (50 tons)	Bale launch:	Fully automatic
Unit pressure:	5,82 kg/cm ²	Supply:	400/50 [V/Hz]
Bale dimensions:	1100 x 780 x 600-1500	Engine power:	15 kW
Bale weight:	app. 200 – 600 kg	Weight:	8500 kg
Productivity:	app. 2-6 bale/h		

Dimension



LEGEND		[mm]
A	length	7460
B	height	2480
C	width	2550
D	filling inlet	2000x720

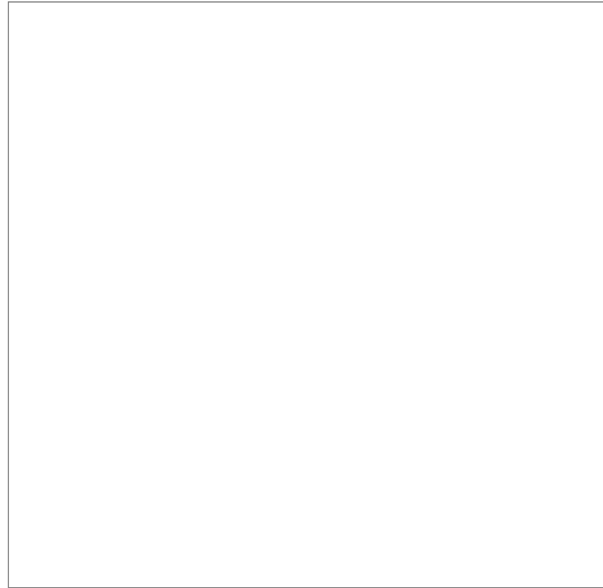
Available steering types

Steering x (EXTRA)

Features

- Controller SIEMENS S7
- Automatic digital steering of the work cycle
- Finished-bale signal
- LCD display
- Stepless maximum pressure regulation with 1 ton progression
- Stepless bale height regulation with 2 cm progression
- Daily/weekly/monthly statistics – the readout of the number of finished bales with their weight estimation
- Different programs for different materials
- Possibility of regulating the length of time for which the pressing plate stays in the lower position
- **NEW !! The ability to connect the machine to the statArtechnic**

Control Panel



Gallery



Contact

Headquarter

ARTechnic
 ul. Gen. St. Maczka 9
 43-300 Bielsko-Biała
 Poland

Phones

Tel. +48 (33) 816 01 69
 fax +48 (33) 443 20 46

E-mail and Web Site

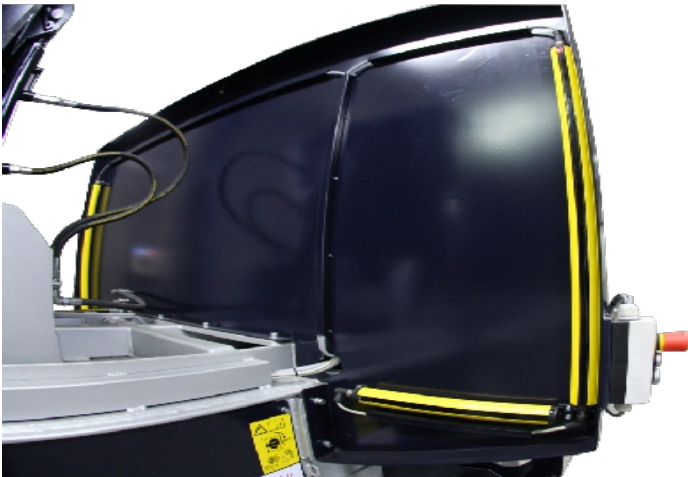
biuro@artehnic.pl
www.artehnic.pl
www.belowniceuzywane.pl

Advantages of the machine:

- **Safety** - is our priority. You can meet a lot of machines on the market, which, despite the declaration of conformity and CE marking do not comply with the basic assumptions of European Safety Standards. Below you may find a few basic safety elements used in our machines:
 - Protection of tying zone



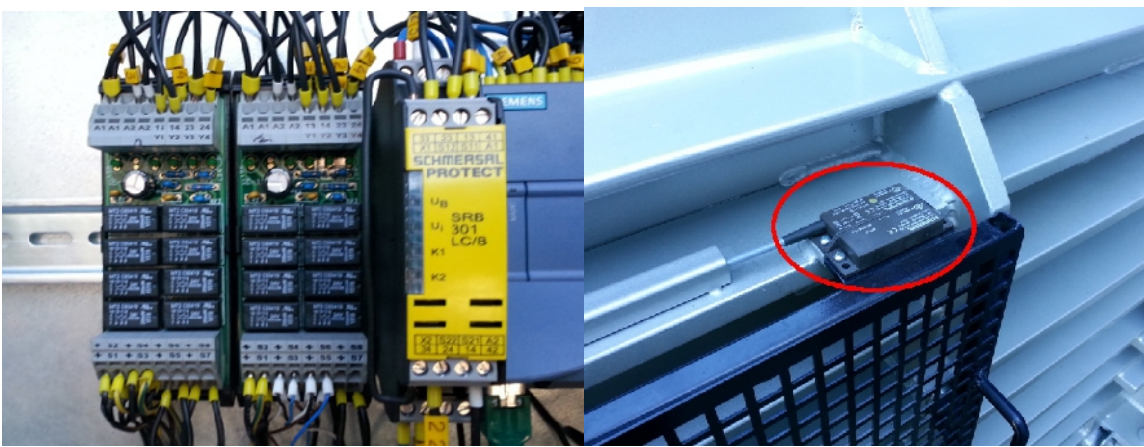
- Protection of feeding zone



- STOP switches

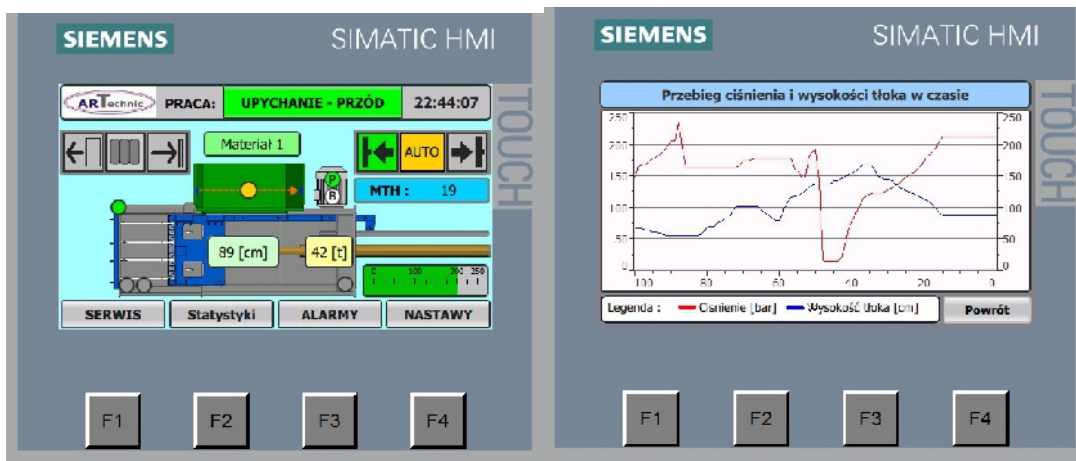


- Security module SCHMERSALL



- **The moving of the pressing plate is kept extremely rigid and straight.** The hydraulic cylinder does not take the bending forces from the pressing plate, which could lead to its damage. These forces are taken over by special plastic guides which are tailored to the corners of the chamber. The guides are made from specially chosen plastic, which is characterized by very high resistance to abrasion. Therefore, these elements are extremely durable. This avoids the need to control the tilt of the pressing plate. Because of all this you can easily exploit our machines, even for very demanding materials, without worrying of an improperly use of the machine.
- **The steel construction** of our machines is designed to withstand loads far in excess of the rated load for the different models (this is why our machines have a generally bigger own mass compared to the competition).
- **Steering:** modern and reliable steering based on PLC SIEMENS S7 with many unique features such as:
 Touch control panel with the visualization of machine's status;
 Stepless maximum pressure regulation with 1 ton;
 Stepless bale height regulation with 2 cm;
 Daily/weekly/monthly statistics – the readout of the number of finished bales with their weight estimation;
 Different programs for different materials;
 Possibility of regulating the length of time for which the pressing plate stays in the lower position;
 the ability to connect the machine to the statArtechnic.





- **A system to prevent the decompressing of material** after subsequent cycles of work.
- **Possibility to bind the packages (bales) with all commonly used materials** like a polyester tape, twine or steel wire
- **The possibility of producing specified machines** concerning the customer's request e.g. changes in the stroke of the pressing plate, changes in the loading hole, changes in the size of the bale, etc.
- **Possibility to choose the version of the controller**, and to choose additional options, depending on individual needs
- **Unmanned and durable** hydraulic system
- **No hidden costs** of operating the machine